

Sands your work into art



KIRJES[®]
OF SWEDEN
www.plano.se

The appreciation of an object of beauty is not just in the eye of the beholder but also in their hands. When your hands meet a velvety surface, a positive sensation arises that can be described by one word. Quality.

KIRJES - Sanding and Polishing System - 2016



KIRJES Sanding and Polishing Motor

Technical info: 300 W, 3000 rpm, extremely quiet. Height: 150 mm. Total length: 300 mm. Weight: 4,5 kg. With two tapered key-chucks = vibration-free running. Chucks: 1,5-10 mm.



Motor. Art. no. KJ913K-230

KIRJES Flexible Shaft has a standard chuck 1,5-10 mm and also a key-less smaller chuck 1,5-8 mm. The shaft has 3 ball bearings for continuous work. The length is 1300 mm.

Hand Pump, double-acting for effective pumping of the inflatable sanders.

Abrasive belt cleaner, made of natural rubber for effective cleaning of the sanding sleeves.



Abrasive Belt Cleaner. Art. no. KJ921

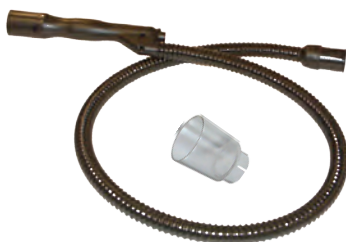


Hand Pump. Art. no. KJ911



Flexible Shaft. Art. no. KJ202S

KIRJES Accessories



Dust Extractor with Extendor. Art. no. KJ211



Dust Extendor. Art. no. KJ219



Small Chuck 1,5-8 mm. Art. no. KJ203

Dust Extractor with Extendor, enable dustfree woodworking. The transparent Extendor can be formed according to need. Small Chuck, 1,5-8 mm, is included in KIRJES Flexible Shaft. The smaller overall size makes the work easier.

Inflatable Sanders



Art. no. KJ120



Art. no. KJ120R



Art. no. KJ130



Art. no. KJ140



Art. no. KJ140R

Article Number	Drum diameter mm	Drum height mm	Shank diameter mm	Replacement rubber bulbs
KJ120	20	32	6	KJ127
KJ120R	20	19	6	KJ159
KJ130	28	80	8	KJ138
KJ140	42	44	6	KJ108
KJ140R	42	40	6	KJ169

Sanding Sleeves



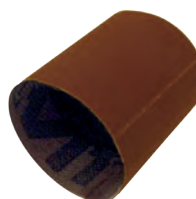
Sleeve to KJ120



Sleeve to KJ120R



Sleeve to KJ130



Sleeve to KJ140



Sleeve to KJ140R

Fits to	Grit no. 60	Grit no. 80	Grit no. 120	Grit no. 150	Grit no. 220	Grit no. 320	Grit no. 400
KJ120		KJ121	KJ122	KJ123	KJ124	KJ125	KJ126
KJ120R		KJ153		KJ155		KJ157	
KJ130	KJ131	KJ132	KJ133	KJ134	KJ139	KJ136	KJ137
KJ140	KJ102	KJ103	KJ104	KJ105	KJ117	KJ106	KJ107
KJ140R	KJ162	KJ163	KJ164	KJ165	KJ166	KJ167	

Brush Sleeves / Oil-wax



(B) Sleeve to KJ120



(B) Sleeve to KJ130



(B) Sleeve to KJ140



(B) Sleeve to KJ140R



Oil-Wax 300ml KJ909

Cloth Sleeves / Oil-wax



(C) Sleeve to KJ120



(C) Sleeve to KJ130



(C) Sleeve to KJ140



(C) Sleeve to KJ140R



Oil-Wax 50ml KJ907

Fits to	Brush Sleeves (B)	Cloth Sleeves (C)
KJ120	KJ820	KJ821
KJ130	KJ830	KJ831
KJ140	KJ840	KJ841
KJ140R	KJ840R	KJ841R

Kirjes Oil-Wax, a pure organic product, easily applied, for a silky surface. In combination with a finishing with cloth sleeves and Kirjes Organic Oil-Wax you will get a very fine result.



Basic Sanding System Art. no. KJ140K-230
Basic Sanding Kit, Motor, Flexible Shaft, Booklet and DVD.



Total Sanding Kit Art. no. KJ101
Hand pump, all 5 Inflatable drums, 15 Sanding Sleeves, Cleaner.



Complete Sanding System
Art. no. KJ101K-230
Total Sanding Kit, Motor, Flexible Shaft, Booklet and DVD.



Detailed Sanding & Polishing Kit
Art. no. KJ120130P
Hand pump, Inflatable drums KJ120 and KJ130, 6 Sanding Sleeves, 6 Cloth Sleeves, Cleaner, Non-toxic Organic Wax.



Basic Sanding Kit Art. no. KJ140R140
Hand pump, Inflatable drums KJ140 and KJ140R, 8 Sanding Sleeves, Cleaner.



Polishing Kit Art. no. KJ908
2 Brush Sleeves and 4 Cloth Sleeves (fitting KJ140 and KJ140R), Non-toxic Organic Wax.



Kirjes is the most complete sanding system which adapts to the shape of your work, whether concave, convex or flat. Today Kirjes is renowned all over the world for being able to create that velvety finished touch on any beautiful wooden object, effectively and pleasantly with no dust and no noise.

